

# SĀFTRON

## Polymer Railing



Meets IBC Code Requirements  
Testing Report Available

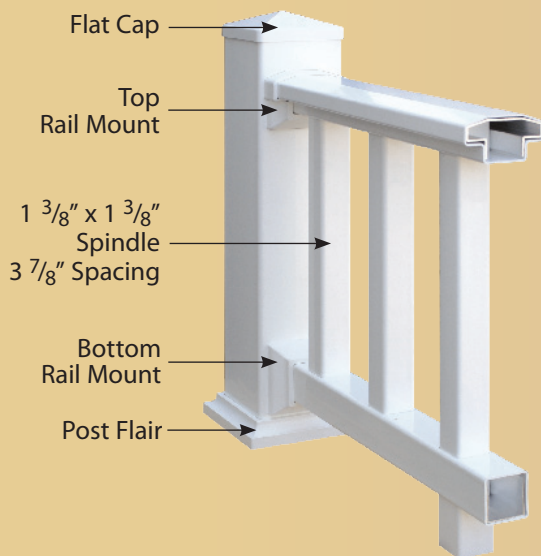
- 36" and 42" Heights
- 4', 6', and 8' Sections (Straight or Stair)
- 4-Way Adjustable Aluminum Post Mounts
- 2 Colors: White and Tan

For more information and dimensioned drawings visit [www.Saftron.com](http://www.Saftron.com)

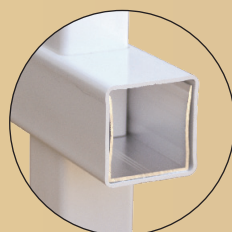


Transferable Lifetime Warranty  
Virtually Maintenance Free

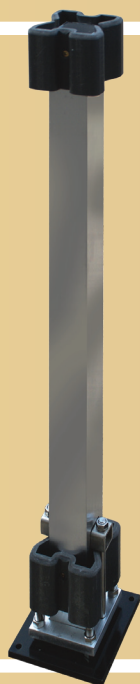
# SÄFTRON *Polymer Railing*



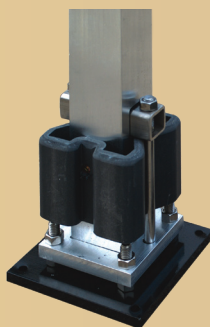
Top & Bottom Rail Aluminum Reinforcement



- Includes:
- 4" x 4" Vinyl Post
  - 4-Way Adjustable Aluminum Post Mount
  - Post Flat Cap
  - Post Flair



## 4-WAY ADJUSTABLE ALUMINUM POST MOUNT



APM Heavy Duty (Bolted)

- 550 lb. ICC Approved
- Bolted Brackets (HD)
- Wall Thickness: .125" (HD)
- Adjustable Plate Thickness: 1/2" (HD)
- Base Plates are Powder Coated to Protect Against Corrosion

**SÄFTRON**

6012 33rd St E  
 Bradenton, FL 34203  
 Tel: (305) 233-5511 Fax: (305) 251-8826  
 Web: [www.saftron.com](http://www.saftron.com)

S O L D B Y :