

SĀFTRON

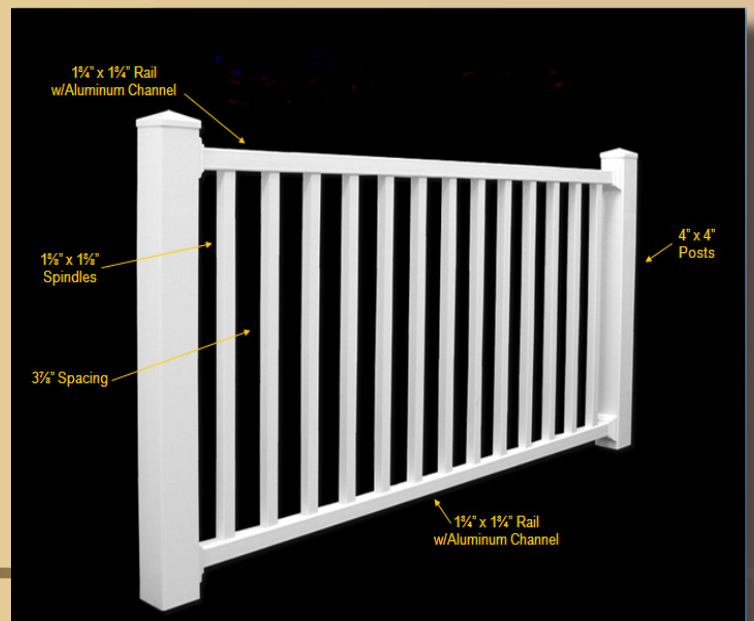
Polymer Railing



Meets IBC Code Requirements
Testing Report Available

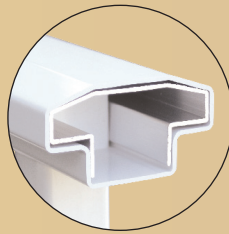
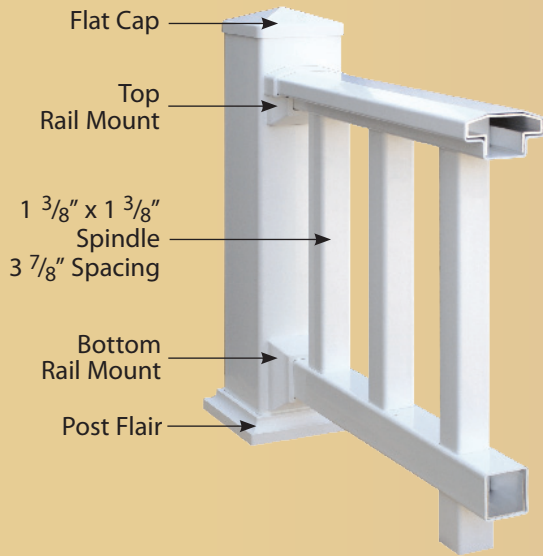
- 36" and 42" Heights
- 4', 6', and 8' Sections (Straight or Stair)
- 4-Way Adjustable Aluminum Post Mounts
- 2 Colors: White and Tan

For more information and dimensioned drawings visit www.Saftron.com

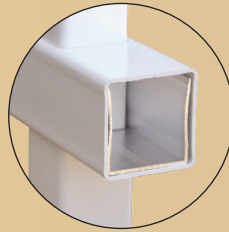


Transferable Lifetime Warranty
Virtually Maintenance Free

SĀFTRON *Polymer Railing*



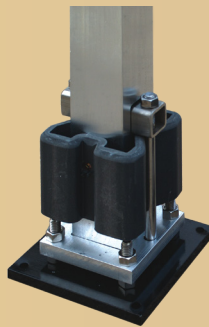
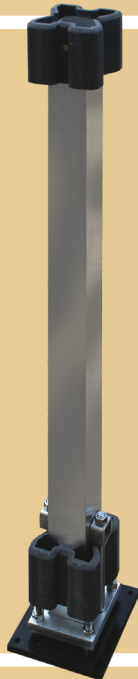
Top & Bottom Rail
Aluminum
Reinforcement



- Includes:
- 4" x 4" Vinyl Post
 - 4-Way Adjustable Aluminum Post Mount
 - Post Flat Cap
 - Post Flair



4-WAY ADJUSTABLE ALUMINUM POST MOUNT



APM
Heavy Duty
(Bolted)

- 550 lb. ICC Approved
- Bolted Brackets (HD)
- Wall Thickness: .125" (HD)
- Adjustable Plate Thickness: 1/2" (HD)
- Base Plates are Powder Coated to Protect Against Corrosion

SĀFTRON

6012 33rd St E
Brandenton, FL 34203
Tel: (305) 233-5511 Fax: (305) 251-8826
Web: www.saftron.com

S O L D B Y :

